

# JOINTGARD EQ™

## JOINTGARD EQ™ PELLETS AND JOINTGARD EQ™ 200 LIQUID

- Supplements produced using only the highest quality nutrients to promote the development and maintenance of health joints and bone.
- Reduce Developmental Orthopedic Disease conditions including OCD in growing horses.
- Improve healing of injuries to joints and bone and decrease the debilitating effects of arthritis.
- **A unique formulation of Micro-Sized nutrients comparable to active Ingredients of GLUCOSAMINE · MSM · CHONDROITIN**



### JOINTGARD EQ™ PELLETS AND LIQUID CONTAIN:

**200 MG HA/OZ ◊ TRACE MINERALS ◊ VITAMINS ◊ MICRONUTRIENTS ◊ AMINO ACIDS**

#### PRODUCT INFORMATION:

**JOINTGARD EQ™ PELLETS** and **JOINTGARD EQ 200 LIQUID** contain the key ingredients necessary for the growth and maintenance of strong, healthy joints and bone. The oral supplements are readily absorbed in the gut and utilized at the cellular level. JointGard EQ Pellets and liquid formulations contain 200 mg of a low molecular weight Hyaluronic Acid (plant based) per ounce combined with a highly concentrated formula including Trace mineral complexes, Micronutrients, and Essential Amino acids needed for active growing, pregnant, performance and aging horses and ponies.

**JOINTGARD EQ™** provides the advantage of choice of liquid and pelleted formulations allowing the owner to use whichever is most convenient and best accepted by their horse. One size doesn't always fit all. In addition the high concentration of nutrients allows for easier transport, storage and use by the horse owner.

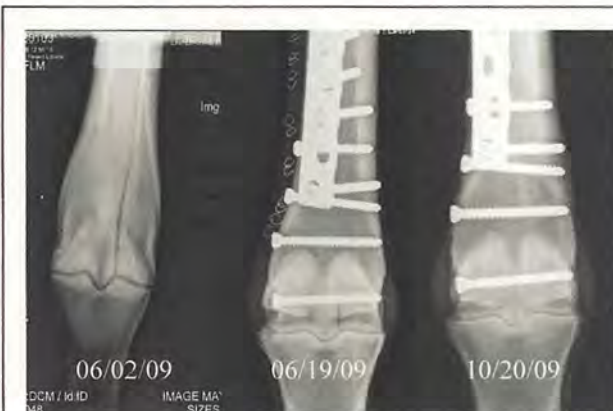
The highly palatable liquid can be top dressed on feed or given by syringe (for sick animals and finicky eaters). The specially designed 1/2 oz. pump makes accurate dosing simple with no mess. The alfalfa based pellets can be top dressed on feed (1/2 oz. per day for a normal adult horse) using the scoop provided.

**JOINTGARD EQ™** products are **USER FRIENDLY, COST EFFECTIVE and THEY WORK.** What more could you want for the money?

**JOINTGARD EQ™ PELLETS** are available in 2.5 lb (80 day), 10 lb (320 day) and 40 lb (1,280 day). Feed 1/2 oz a day.

**JOINTGARD EQ™ 200 Liquid** is available in a 32 oz (64 day) bottle with a convenient 1/2 ounce pump. Feed 1/2 oz a day.

Manufactured by the maker of **LAMIGARD® PELLETS AND LAMIGARD® RX PASTE** for horses with **LAMINITIS.**  
**LAMIGARD® Rx is a truly one of a kind breakthrough in the battle against LAMINITIS!!**



TB filly 3yo medial condylar fx left hind (06/02/09) extending proximally to the tarsal/metatarsal joint. Repaired with plate and 15 screws. Prognosis to race at time of surgery poor. Plate removed and 4 screws left in place in the distal condyle (10/20/09). The filly is sound (11/20/09) with no joint effusion and will be returned to training.

**GREAT RESULT WITH JOINTGARD® PELLETS!!**



# JOINTGARD EQ™

## For the Development & Maintenance of Healthy Joints & Bone

### JointGard™ EQ 200 Solution

Each Fluid Ounce (30 ml) Contains:

Glycine (min)	708 mg	Lysine (min)	354 mg
Glutamine (min)	708 mg	Proline (min)	219 mg
Glucuronic Acid (min)	354 mg	Glutamic Acid (min)	212 mg
Aspartic Acid (min)	354 mg	Arginine (min)	148 mg
Hyaluronic Acid (min)	200 mg	Threonine (min)	56 mg

**INGREDIENT STATEMENT:** Water, Sorbitol, Glycine, L-Glutamine, Hyaluronic Acid, L-Proline, Condensed Extracted Glutamic Acid Fermentation Products, Pyridoxine Hydrochloride, Manganese Sulfate, Ascorbic Acid, Glucuronic Acid, Copper Sulfate, Sulfur, L-Arginine, L-Threonine, L-Tyrosine, Gelatin, L-Lysine, DL-Methionine, L-Serine, L-Valine, L-Phenylalanine, L-Histidine, L-Isoleucine, Aspartic Acid, L-Alanine, Xanthan Gum, Sodium Benzoate (a preservative), Yucca Schidigera Extract (a natural flavoring agent), Natural and artificial flavors.

**FEEDING DIRECTIONS FOR ADULT HORSES:** For an average 1,100 lb (500 kg) horse, feed 1/2 fl oz (15 ml) daily with the horse's regular feed or give orally. **LOADING PERIOD:** Feed double amounts for the first 5 consecutive days. Feed others according to body weight, less for smaller horses and ponies, more for larger breeds.

**As A Pre-Competition Product:** Feed 1 fl oz (30 ml) for 3 consecutive days prior to event.  
(Enclosed Pump: 1 stroke = 1/2 fl oz)

Keep Out Of Reach Of Children  
For Equine Use Only • Do not feed to other species of animals  
Store in a cool dry place • Shake well before using  
Protect from freezing • Do Not Use if seal is damaged or missing

Produced in the USA for

Equine Healthcare Solutions, LLC • 1040 Hume-Bedford Road • Paris, KY 40361

PH: (859) 987-7505 • FAX: (859) 988-0069

dmc.laminitis@gmail.com

Prod. No. 199A-EHS • Rev: 040609

Lot No. XXXXXX

### JointGard™ EQ Plus Pellets

Each Ounce (30 grams) Contains:

Glycine (min)	708 mg	Lysine (min)	354 mg
Glutamine (min)	708 mg	Proline (min)	219 mg
Glucuronic Acid (min)	354 mg	Glutamic Acid (min)	212 mg
Aspartic Acid (min)	354 mg	Arginine (min)	148 mg
Hyaluronic Acid (min)	200 mg	Threonine (min)	56 mg

**INGREDIENT STATEMENT:** Alfalfa Meal dehydrated, Glycine, L-Glutamine, Hyaluronic Acid, L-Proline, Condensed Extracted Glutamic Acid Fermentation Products, Pyridoxine Hydrochloride, Manganese Sulfate, Ascorbic Acid, Glucuronic Acid, Copper Sulfate, Sulfur, Silicon Dioxide, L-Arginine, L-Threonine, L-Tyrosine, Gelatin, L-Lysine, DL-Methionine, L-Serine, L-Valine, L-Phenylalanine, L-Histidine, L-Isoleucine, Aspartic Acid, L-Alanine, Bentonite, Vegetable Oil, Sodium Benzoate (a preservative), Yucca Schidigera Extract (a natural flavoring agent), Natural and artificial flavors.

**FEEDING DIRECTIONS FOR MATURE & YOUNG GROWING HORSES:** Feed 1/2 oz (15 grams) (1/2 measure) daily with the horse's regular feed.  
**LOADING PERIOD:** Feed double amounts for the first 5 consecutive days.

**As A Pre-Competition Product:** Feed 1 oz (30 grams) for 3 consecutive days prior to event.  
(1 ounce (30 gram) measure by weight enclosed)

Keep Out Of Reach Of Children  
For Equine Use Only • Do not feed to other species of animals  
Store in a cool dry place  
Do Not Use if seal is damaged or missing

Produced in the USA for

Equine Healthcare Solutions, LLC • 1040 Hume-Bedford Road • Paris, KY 40361

PH: (859) 987-7505 • FAX: (859) 988-0069

dmc.laminitis@gmail.com

Prod. No. 435F-EHS • Rev: 041709

Lot No. XXXXXX

## JOINTGARD EQ™ PELLETS AND LIQUID CONTAIN:

**200 MG HA/OZ ◊ TRACE MINERALS ◊ VITAMINS ◊ MICRONUTRIENTS ◊ AMINO ACIDS**

### PRODUCT INFORMATION:

**JOINTGARD EQ™ PELLETS** and **JOINTGARD EQ 200 LIQUID** contain the key ingredients necessary for the growth and maintenance of strong, healthy joints and bone. The oral supplements are readily absorbed in the gut and utilized at the cellular level. JointGard EQ Pellets and liquid formulations contain 200 mg of a low molecular weight Hyaluronic Acid (plant based) per ounce combined with a highly concentrated formula including Trace mineral complexes, Micronutrients, and Essential Amino acids needed for active growing, pregnant, performance and aging horses and ponies.

**JOINTGARD EQ™** provides the advantage of choice of liquid and pelleted formulations allowing the owner to use whichever is most convenient and best accepted by their horse. One size doesn't always fit all. In addition the high concentration of nutrients allows for easier transport, storage and use by the horse owner.

The highly palatable liquid can be top dressed on feed or given by syringe (for sick animals and finicky eaters). The specially designed 1/2 oz. pump makes accurate dosing simple with no mess. The alfalfa based pellets can be top dressed on feed (1/2 oz. per day for a normal adult horse) using the scoop provided.

**JOINTGARD EQ™** products are **USER FRIENDLY, COST EFFECTIVE and THEY WORK.** What more could you want for the money?

**JOINTGARD EQ™ PELLETS** are available in 2.5 lb (80 day), 10 lb (320 day) and 40 lb (1,280 day). Feed 1/2 oz a day.

**JOINTGARD EQ™ 200 Liquid** is available in a 32 oz (64 day) bottle with a convenient 1/2 ounce pump. Feed 1/2 oz a day.

Manufactured by the maker of **LAMIGARD® PELLETS AND LAMIGARD® RX PASTE** for horses with **LAMINITIS.**

**LAMIGARD® Rx is a truly one of a kind breakthrough in the battle against LAMINITIS!!**

Wire 2 Wire Veterinary Products, LLC • 1040 Hume-Bedford Rd. • Paris, Ky. • 40361

**For this and other product information call W2W Veterinary Products  
PH: 859-987-7505 or visit us on the WEB: w2wvp.com**